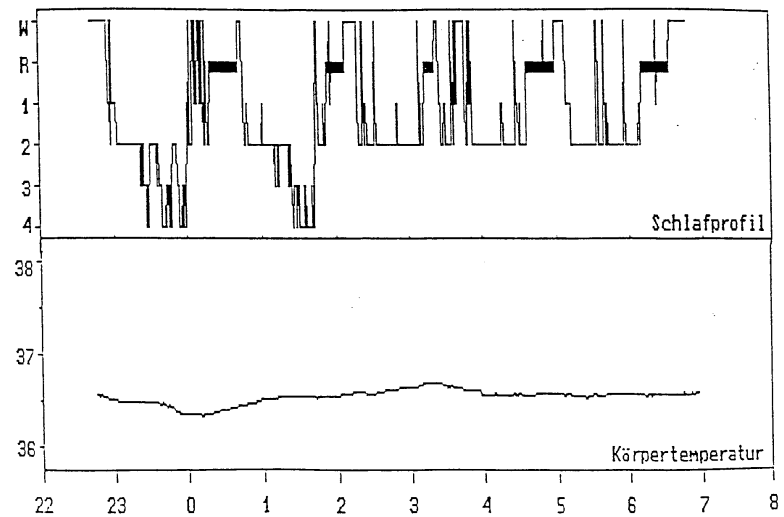


Healthy Subject

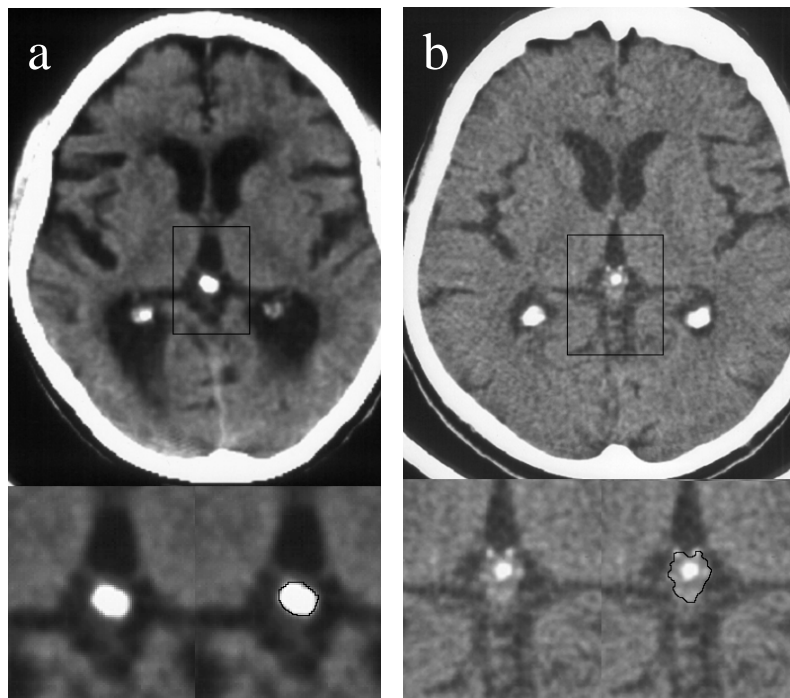


Shiftworker

Kunz - unpublished

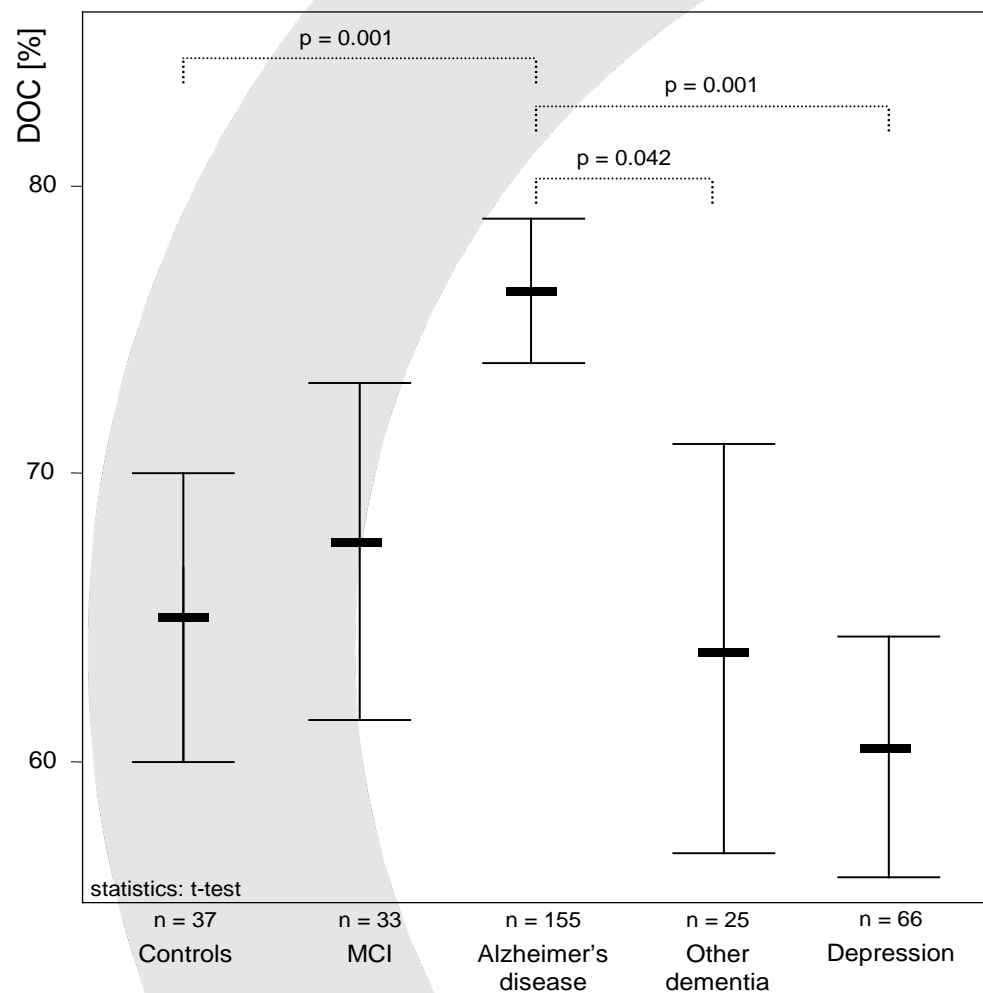


Pinealis Calcification vs. Alzheimer`s



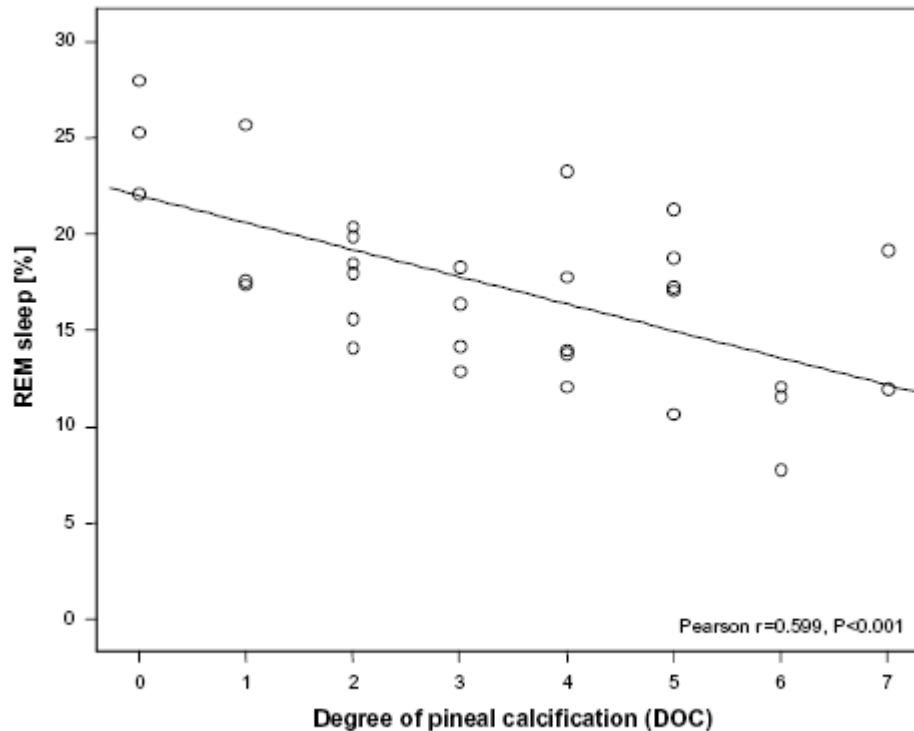
**Pineal calcification in alzheimer`s disease –
in vivo study using computed tomography**

Mahlberg R et al. – Neurobiology of Aging, 2008



DOC in Primary Insomnia

R. Mahlberg et al. / Sleep Medicine 10 (2009) 439-445



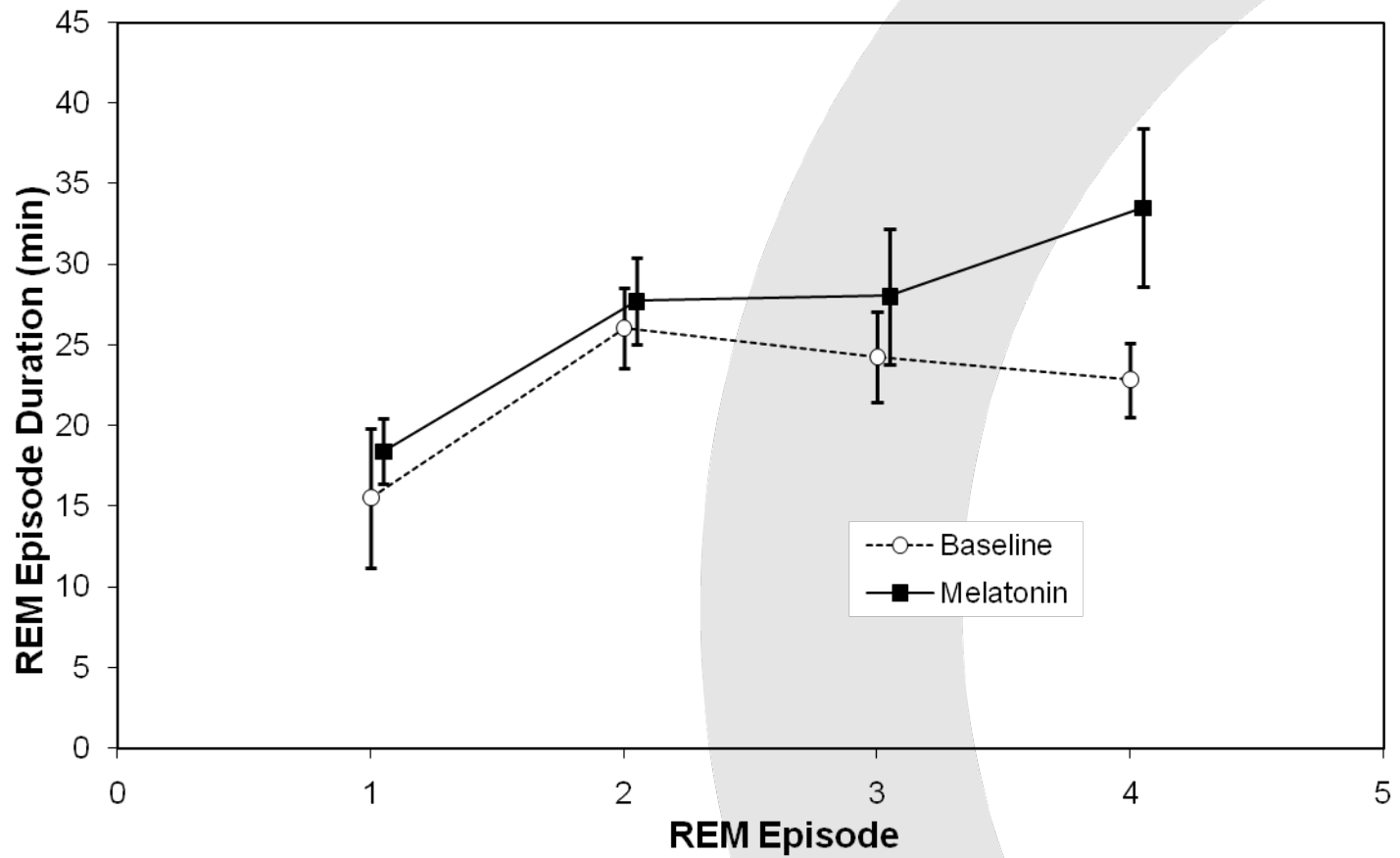
n = 31

TST: $r = -.463$; $p = .010$

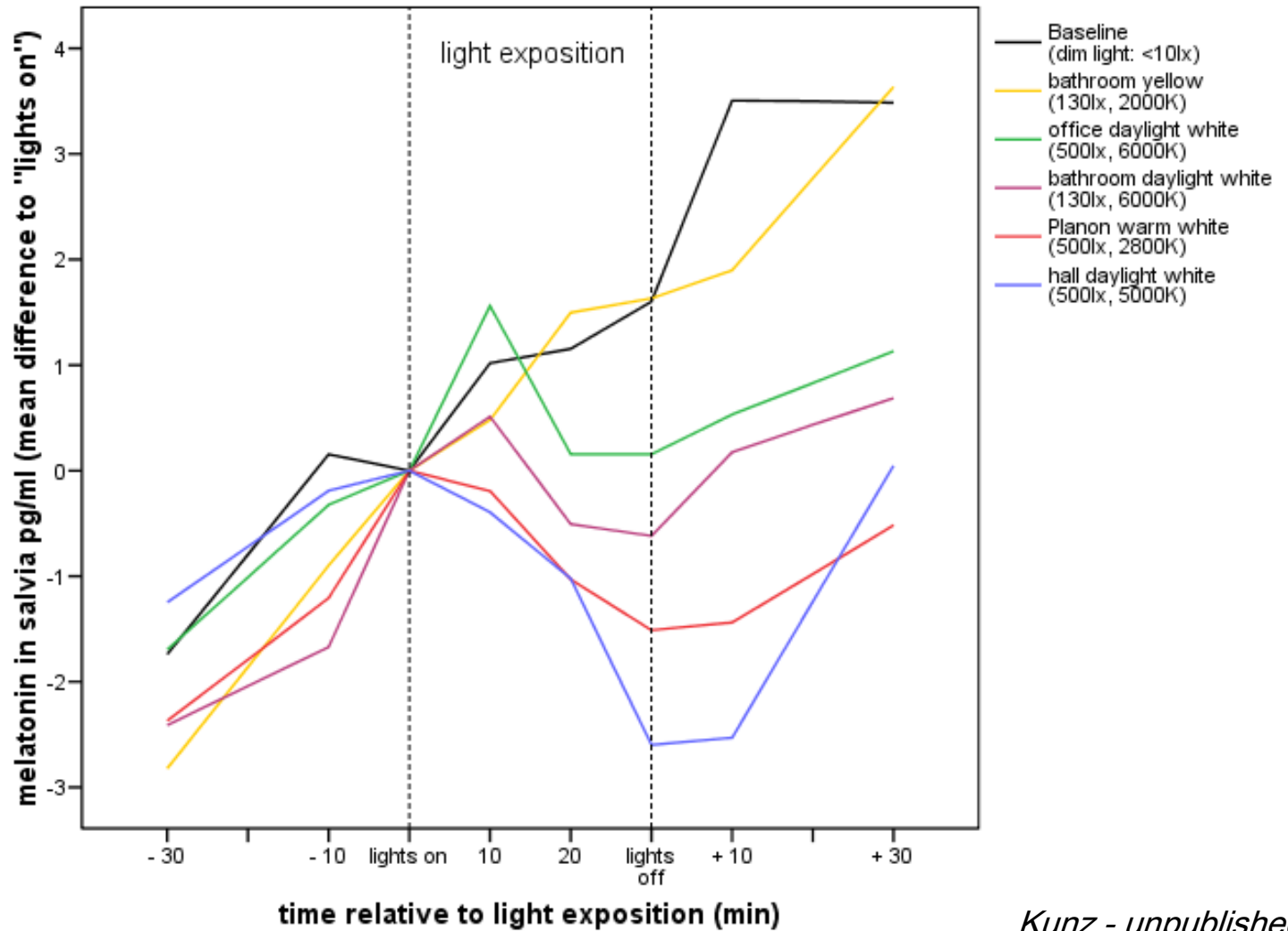
SE: $r = -.422$; $p = .020$

WASO: $r = .360$; $p = .051$

Fig. 2. Degree of pineal calcification (DOC) vs. REM sleep percentage.

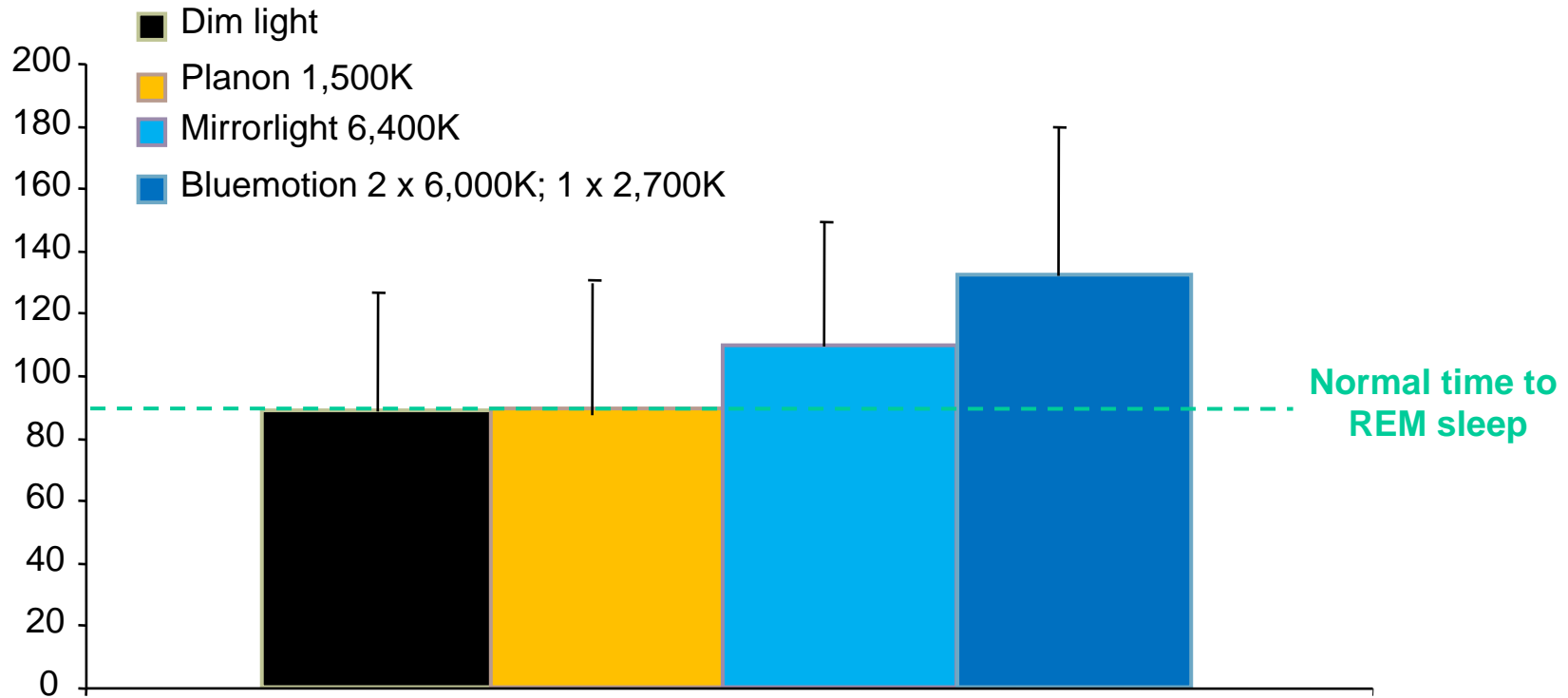


Kunz et al. J Clin Endocrinol Metab 2004;89:128-134



Kunz - unpublished

REM-Sleep-Latency (min), n=7



Kunz - unpublished